

# SALVESEN GRAHAM

THE COLLECTION

## AVENUE LAMP RUBY

SGAVLMPRU

From \$735.00

Our Avenue Lamps are a classical collection with the high gloss hand painted finish lending a contemporary flair, taking inspiration from British heritage and Interiors. Mary and Nicole designed the lamps to work wonderfully as a pair, or as a single lamp on a chest or side table.

Created in the English countryside from sustainably sourced solid beech wood that has been hand finished by experienced craftspeople, our lamp collection has been carefully designed with a sensitivity to traditional architectural references married with the Salvesen Graham flair for colour and playful design. Complete with a brass stem and natural brown twist cotton flex, our lamps look equally at home in both town and country.

**Dimensions:** L14cm x W14cm x H39.5cm

**Lead Time:**

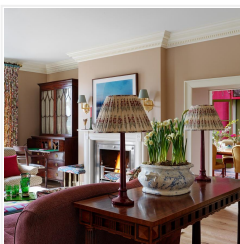
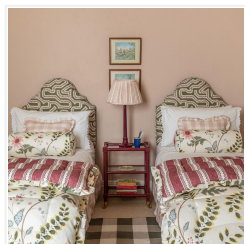
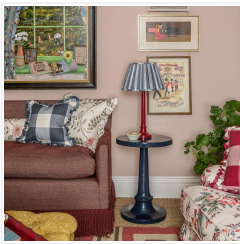
Upto 10 weeks if not in stock

**Material:**

High Gloss Painted Finish, Cotton, Brass, FSC Solid Beech Wood

**Production:**

Hand Painted, Hand Crafted



Salvesen Graham  
Unit 1, One Riverside,  
One Eastfields Avenue,  
London SW18 1FQ

Tel: +44 207 967 7777 | Email: [info@salvesengraham.com](mailto:info@salvesengraham.com)